

Setup Requirements

Program Key Values (PKV)

Add **RemoteEnabledType**

Value set to **WPPI**

This Program Key Value checks for meters where the meter type matches 'E-%D' or 'S-%D'

Setups > Setups > Standard > Program Key Values > Program Key Values Setup

Program Key Values Setup (BROWSE)

129 of 149

OK Cancel

Environment Values

Name: RemoteEnabledType

Value: WPPI

User:

Description: Used in a standard 4gl function
(hasRemoteMeters) that will determine
if an account has remote enabled meters.
When set to WPPI, checks for meters
whose meter type matches E-%D

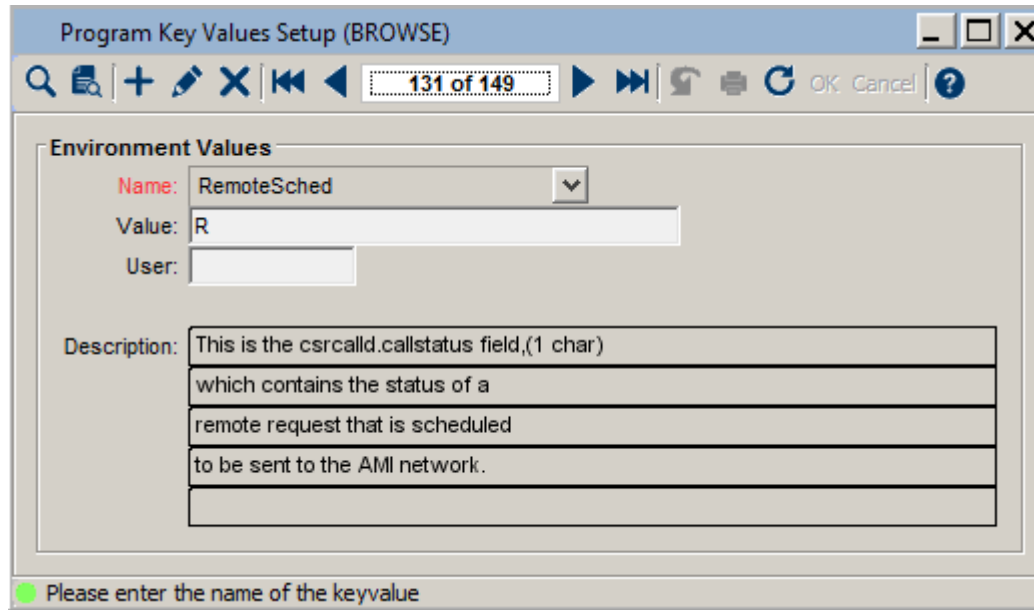
Ready

Note: If a Program Key Value is missing from the Program Key Values Setup table, add it to the Program Key Values Description Setup table. For assistance, submit a WSC ticket.

Add RemoteSched

Value set to R

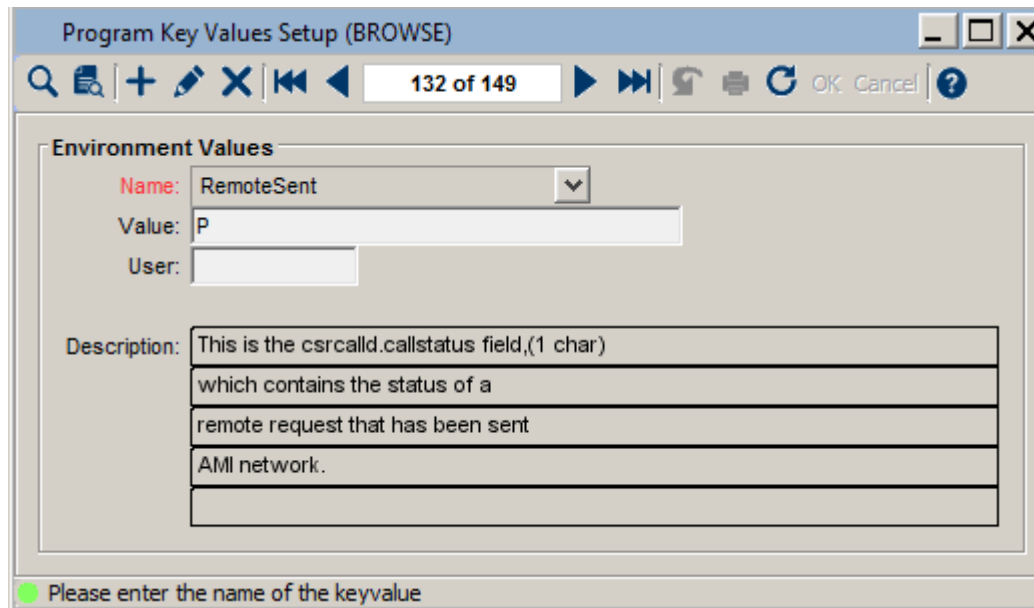
This is the status of an order where remote actions are possible.



Add RemoteSent

Value set to P

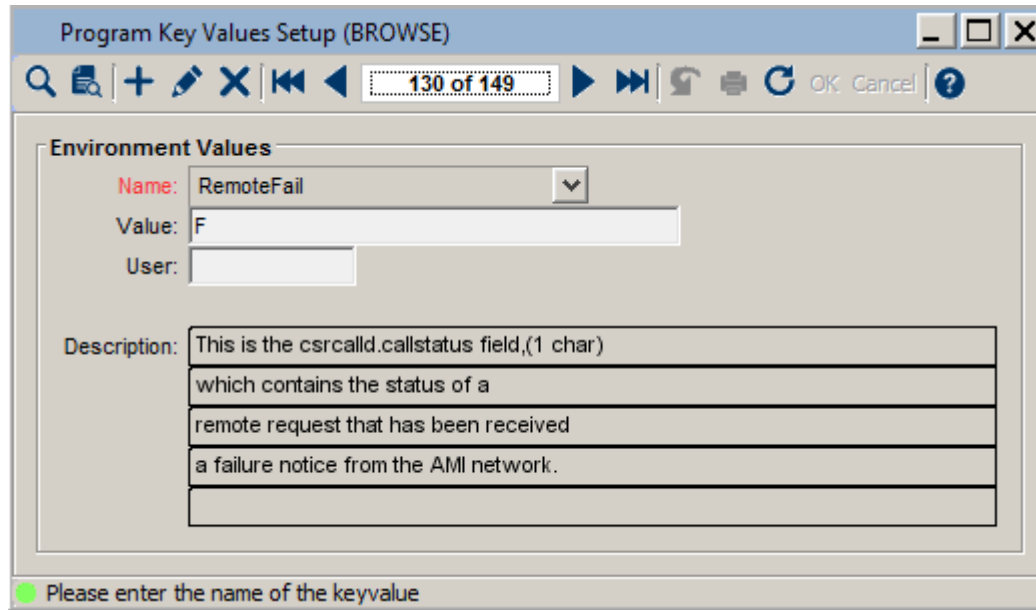
This is the status of an order after a successful remote action request.



Add RemoteFail

Set value to F

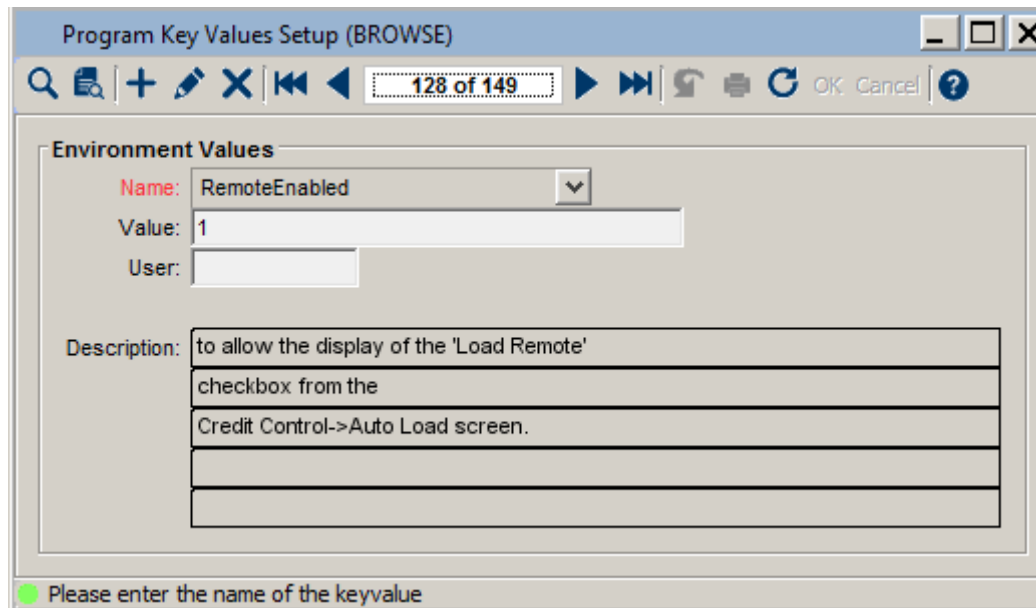
This is the status of an order after an unsuccessful remote action request.



Add RemoteEnabled

Set Value to 1

This enables the remote action functionality.



Call Status Codes

Verify the call status codes 'F', 'P', and 'R' exist in the Call Status Codes table. These correspond to the settings used in the Program Key Values.

CARE > Call Status Codes

Status	Short desc	Long desc
C	COMPLETED	COMPLETED
F	Failed AMI	Failed AMI Transactions
L	LOGGED	LOGGED CALLS
P	PENDING	PENDING
R	Schd AMI	Scheduled AMI Remote Action
S	SCHEDULED	SCHEDULED
V	VOIDED	VOIDED

Customer Properties / NorthStar Properties

Submit a WSC ticket to WPPI for setup assistance.

This step creates the URL that allows Utilities to use the remote actions features.

Note: WPPI Staff will add the following URL's to the Customers Properties table. The Remote Actions features will not be enabled until this step has been completed.

ns.remote.actions.disconnects.url
(example: <http://mdmservices.wppienergy.org/energyip/northstar/disconnects/process/utilityID#>)

ns.remote.actions.reconnects.url
(example: <http://mdmservices.wppienergy.org/energyip/northstar/reconnects/process/utilityID#>)